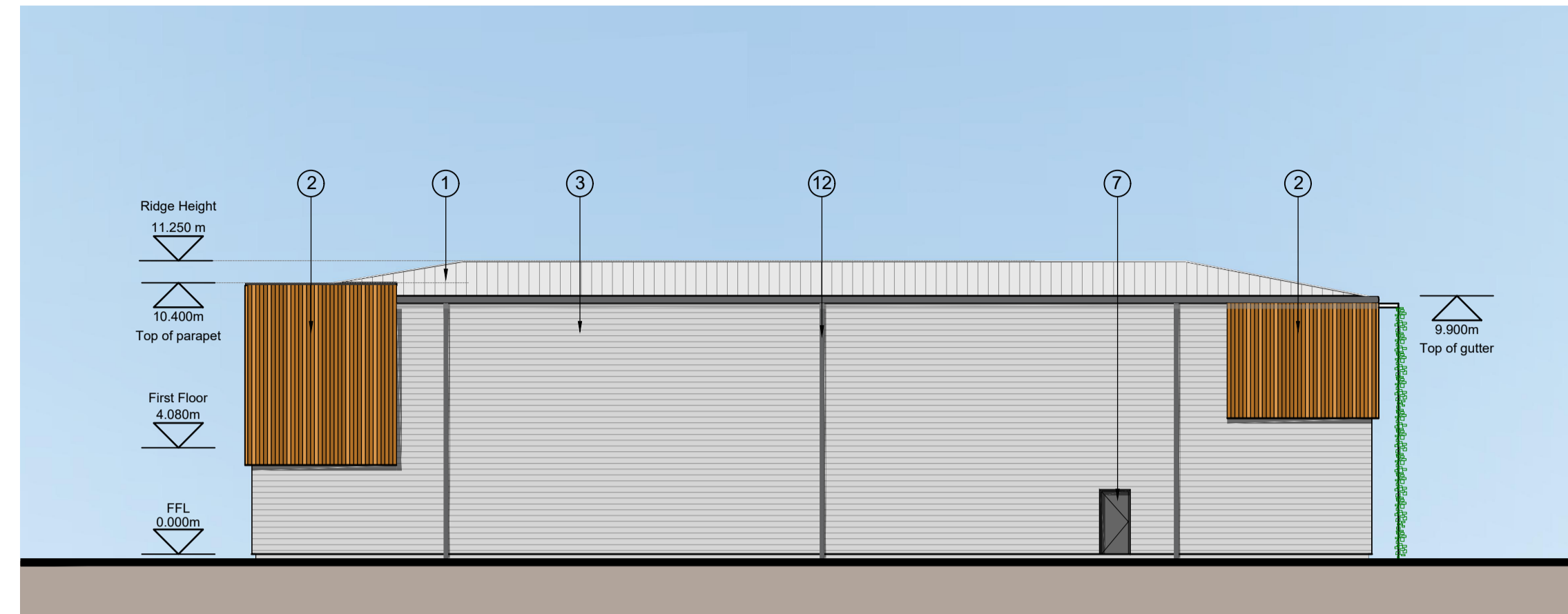


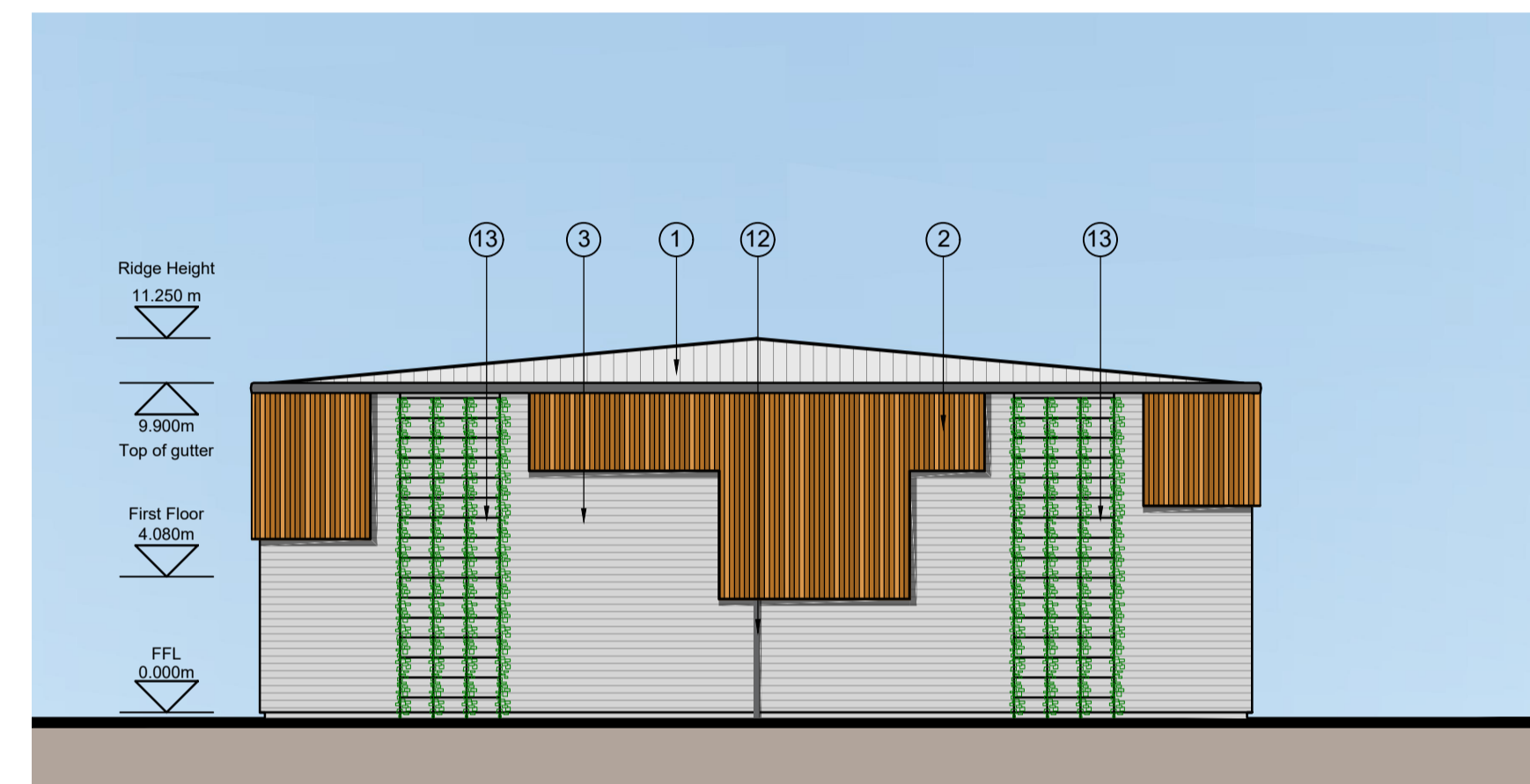
NORTHERN ELEVATION



WESTERN ELEVATION



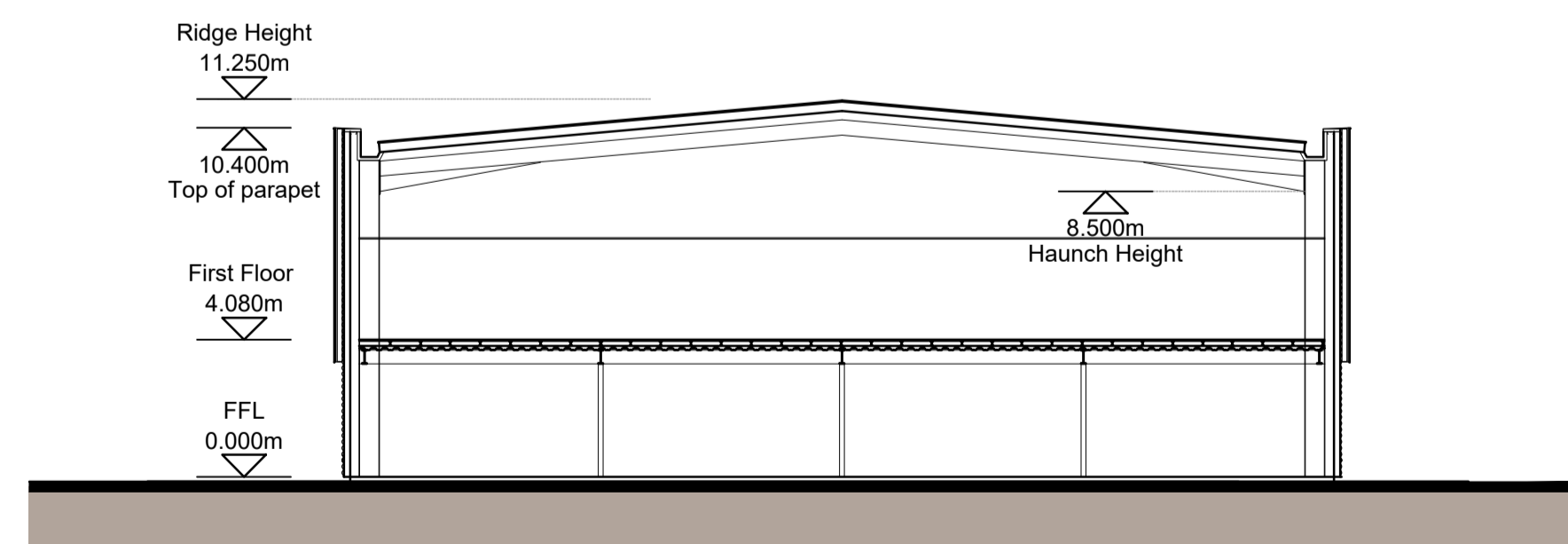
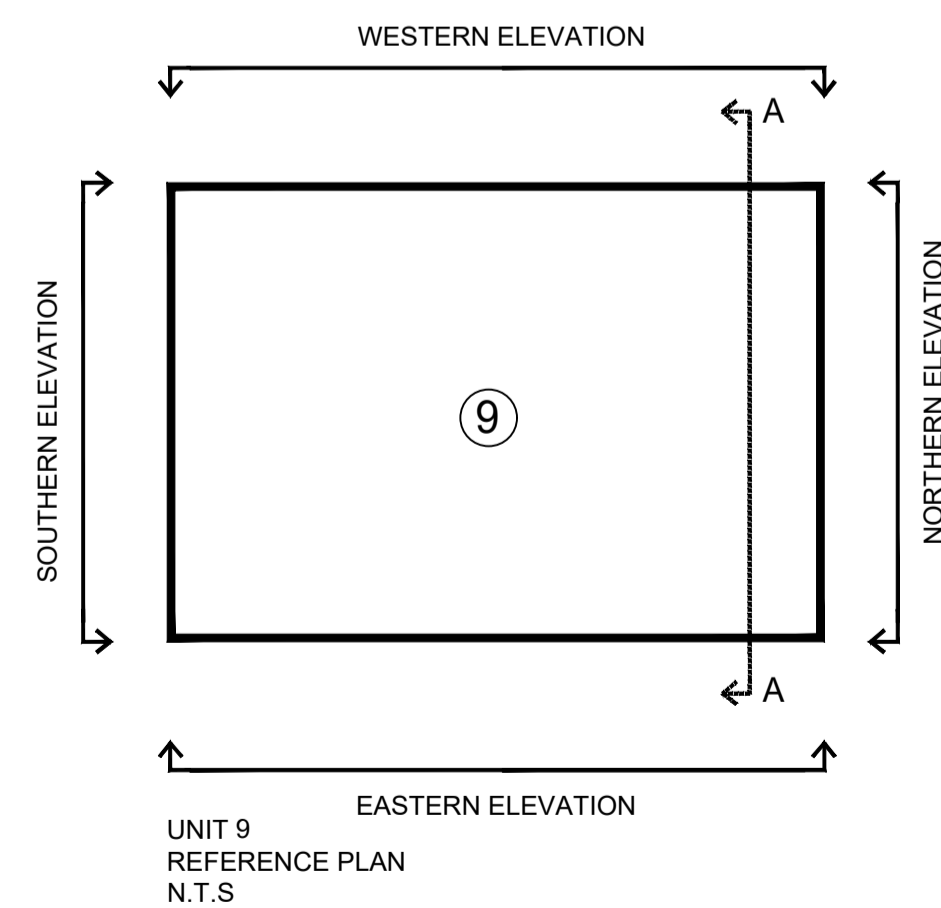
EASTERN ELEVATION



SOUTHERN ELEVATION

191

- MATERIALS KEY**
- ① PROFILED ROOF CLADDING (GOOSEWING GREY RAL 7038)
 - ② SIBERIAN LARCH CLADDING
 - ③ HORIZONTAL ARC PROFILE CLADDING (METALLIC SILVER RAL 9006)
 - ④ ALUMINIUM FRAMED WINDOWS (ANTHRACITE RAL 7016)
 - ⑤ ALUMINIUM FRAMED ENTRANCE DOORS AND FULL HEIGHT GLAZING (ANTHRACITE RAL 7016)
 - ⑥ LOADING BAY DOORS (ANTHRACITE RAL 7016)
 - ⑦ STEEL PERSONNEL DOORS (ANTHRACITE RAL 7016)
 - ⑧ STEEL BOLLARD (GREEN RAL 6018)
 - ⑨ MAIN ENTRANCE BRISE-SOLEIL
 - ⑩ SIGNAGE ZONE, INDICATIVE
 - ⑪ BACKLIT ILLUMINATED ALUMINIUM UNIT NUMERAL (RAL 6018 FACE)
 - ⑫ ALUMINIUM RAINWATER GOODS (ANTHRACITE RAL 7016)
 - ⑬ GREEN WALL



UNIT 9 SECTION AA

Client:
HE2 READING 1 GP LTD (LONDON)



Project:
HEADLEY ROAD EAST
WOODLEY

12 Warren Yard,
Warren Park,
Milton Keynes,
MK12 5HW
01908 305 246

info@prc-group.com
www.prc-group.com

Drawing Title:
UNIT 9
PROPOSED ELEVATIONS
& SECTION

Architecture
 Planning
 Master Planning
 Urban Design
 Interiors
 Landscape

Scale @ A1: 1:200
 Checked by: JR
 Date: SEPT 21

Job No: 11359
 Stage: PL 123
 Drawing No: A
 Rev: A

Issue Status:
 Construction Preliminary
 Information Approval
 Tender

Offices
 Working
 London
 Milton Keynes
 Warsaw

This page is intentionally left blank